

Heavy Duty

Camera Enclosure's



CVCAMBOXNL - Heavy Duty Enclosure	
Construction	32 Gauge 0.090" Steel
Finish	Weld Ready Primer
Used With	CVC240HXL Series, CVC400 Series, CVC470HXL Series, CVC500AH Series
Dimensions	5.19" W x 3.75" H x 6.50" D
Option	Flush Mount Bracket, Part # CVCAMBOXNL-FM



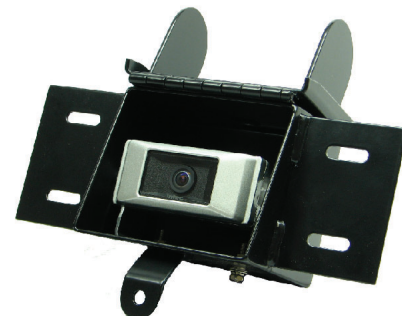
CVCAMBOXWL - Lockable Heavy Duty Enclosure	
Construction	32 Gauge 0.090" Steel
Finish	Weld Ready Primer
Used With	CVC240HXL Series, CVC400 Series, CVC470HXL Series, CVC500AH Series
Dimensions	4.72" W x 3.87" H x 3.75" D



CVCAMBOXWLB - Custom, Lockable HD Enclosure	
Construction	32 Gauge 0.090" Steel
Finish	Powder Coat Black
Used With	CVC240HXL Series, CVC400 Series, CVC470HXL Series, CVC500AH Series
Dimensions	15" W x 3.75" H x 22.13 D



CVCAMBOXWLFM - Flush Mount, Lockable HD Enclosure	
Construction	32 Gauge 0.090" Steel
Finish	Powder Coat Black
Used With	CVC240HXL Series, CVC400 Series, CVC470HXL Series, CVC500AH Series
Dimensions	9.72" W x 3.75 H x 3.86" D



Contact your sales rep at (west) 800-468-3254 or (east) 800-522-5989 for additional information pertaining to your particular application.

Quality first for performance that lasts

www.intecvideo.com

Corporate: 23301 Vista Grande, Laguna Hills, CA 92653 | Eastern: 4256 State Route 51 North, Rostraver Township, PA 15012

HD Enclosure Spec Rev B 12/2021 | Specifications Subject to Change Without Prior Notice. Intec® and Car Vision® are registered trademarks of Intec Video Systems, Inc. © 2021 Intec Video Systems, Inc. Additional information can be found by visiting www.intecvideo.com